

Research and Development Blueprint



Who we are

We are critical and creative multidisciplinary thinkers who action real change in work health and safety.

We are leaders in work health and safety research and development.

The Centre for Work Health and Safety is a world-class collaborative research body that drives a smarter approach to the way we think and act about work health and safety (WHS).

We are a part of the NSW Government, giving us unique access to data and policy influencers to ensuring our research turns into tangible outcomes.

Our diverse team allows us to challenge traditional methods, and foster a culture of collaboration, trust and respect.

Applying research to practical safety solutions.

We champion collaborative work health and safety research and development partnerships with global industry, academic and private innovators.

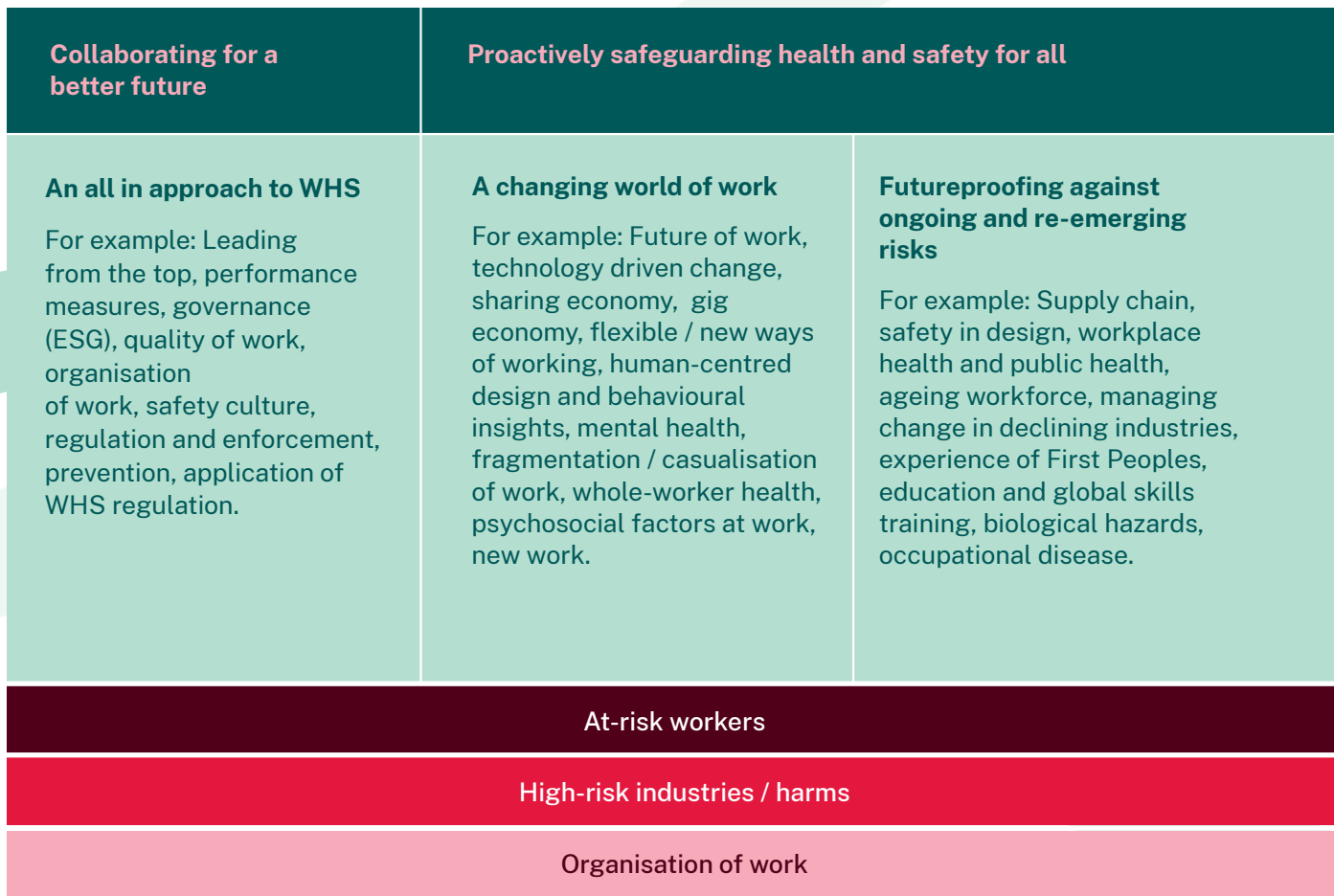
We enable access to funding to ensure research and development insights are turned into tangible outcomes, and shared for maximum impact.



We work with...	Our expertise...	Our work is...
<ul style="list-style-type: none">• Leading academics• Industry innovators• Workers• Government• NGOs• Regulators• WHS Professionals• Students and early career researchers	<ul style="list-style-type: none">• Policy• Business• Outreach• Data science• Research• Development• Education• Innovation• Behavioural insights• Regulation	<ul style="list-style-type: none">• Industry driven• Credible• Ethical• Collaborative• Methodologically robust• Outcome focused

What we do

Research and development



Developing future leaders

We invest in the future of WHS.

- We encourage new people to enter research through our academic studies program; where undergraduate, Honours, Masters and PhD students are invited to participate in research and development.
- We bring together current and future WHS leaders and experts from around the globe to share experiences and information on contemporary issues facing WHS, with the aim of promoting prevention worldwide, and enabling connections between industry and academic innovators.
- We advance tangible solutions that can prevent harm in the workplace, creating evidence-based marketable products or services.
- We have many ways in which we can redirect our investment back into the community we serve, for example, in the case of our real-time RCS detector, the entirety of our financial support was passed on to the consumer in the form of rebates when purchasing the technology.

How we do it

This collaborative approach allows us to respond in real-time to emerging government, industry, and community needs.



“WHS RADAR highlights the current state of play with regard to WHS in and outside of Australia, as well as point to potential WHS issues in the future world of work.”

Discovery

- All innovation starts out life as an idea.
- Many ideas come to us directly from regulators, workers, industry and academia. Other ideas are sparked by the intelligence that we gather through WHS RADAR about emerging trends, leading indicators, new technologies and the changing world of work.
- We prioritise ideas in line with the needs of the community.
- We choose research and development innovators to work with us on an idea through competitive international tenders, investment partnerships, and opportunity-driven engagements.

Co-design

- Ideas often don't come to the Centre fully formed. When we want to know more about an idea, we open up the conversation to a broader audience.
- We operate from a belief that collaboration is key to understanding the whole issue and creates break-through success. We bring divergent thought and expertise to identify, pose and tackle important questions that emerge.
- This co-design approach advances these ideas into fully-fledged research and development opportunities.

Research & Development

- Not all solutions require a traditional research approach. We underpin our process with a diverse range of methodologies to drive contemporary outcomes.
- Not just a funding partner, we embed our experts into the research and development teams.
- We work closely with partners to respond to insights as they emerge.

The result



Delivery

- Our work makes a difference to work health and safety challenges in the workplace.
- By using a human-centred approach, our evidence-based solutions are developed with real-world application in mind.
- We are in a unique position to ensure our research insights are turned into practical and accessible interventions, created with the end user in mind for maximum uptake.

Impact

- Ensuring the research is practical and useful for the end user
- Generating and/or distributing new knowledge about work health and safety risks and controls
- Quickly translating research findings and new knowledge into practice and innovative harm-prevention interventions
- Return on investment

Our solutions range from...

- ★ New information
- ⚙️ Tools
- 🌀 Technologies
- ↔️ Change of work practices
- 🧩 Education and engagement
- 🌸 New opportunities
- ✓ Better regulation
- ✿ Policy influence
- ☁️ Preparing for the future
- ~ Behaviour change
- 👤 Enabling business

Engage with us

Stay up-to-date with the Centre's research, apply for a research partnership or pitch your research idea to us.

w centreforwhs.nsw.gov.au
e contact@centreforwhs.nsw.gov.au

    @CentreforWHS



This document and the work it describes were funded through the Workers Compensation Operational Fund. Its contents, including any opinions and/or conclusions expressed, are those of the authors alone and does not necessarily reflect SafeWork NSW policy.

© Crown Copyright

The document may be downloaded, displayed, printed and reproduced without amendment for personal, in-house or non-commercial use.

Any other use of the material, including alteration, transmission or reproduction for commercial use is not permitted without the written permission of Department of Customer Service (DCS). To request use of DCS's information for non-personal use, or in amended form, please submit your request via email to contact@centreforwhs.nsw.gov.au

